

REPEATER WALL-MOUNT DMX/RDM OPTO-SPLITTER



Models shown: 1. PWREP WM P8 TERM NONRDM SML
2. PWREP WM P8 TERM RDM MED

WARRANTY

3-year limited warranty. Complete warranty terms located at:
<https://www.acuitybrands.com/support/warranty>

NOTE

Actual performance may differ as a result of end-user environment and application. Specifications subject to change without notice.

ORDERING INFORMATION

PWREP				EXAMPLE: PWREP WM P12 TERM RDM MED			
Series	Form Factor	Port Quantity	Port Type	Model	Enclosure		
PWREP Pathway DMX Repeater	WM Wall-mount	P4 ¹ 4 DMX Ports	TERM Compression-Fit Terminal	NONRDM DMX Only	SML 10" x 13" x 4.5" Small DIN Enclosure		
		P8 ² 8 DMX Ports		RDM E1.20 RDM Compliant	MED 10" x 23" x 4.5" Medium DIN Enclosure		
		P12 ³ 12 DMX Ports					
		P16 ^{3,4} 16 DMX Ports					

Notes

- P4 available with SML size enclosure only.
- P8 with NONRDM available with SML size enclosure only; P8 with RDM available with MED size enclosure only.
- P12 and P16 available with MED size enclosure only.
- P16 available with NONRDM only.

OVERVIEW

The Pathway DMX Repeater series of opto-splitters are an essential component of DMX distribution systems, permitting star-wiring configurations while isolating and protecting equipment from electrical faults.

Choose from 4, 8, 12 or 16 Output Port models, DMX-Only, all internally pre-wired in small or medium-sized enclosures are ready for installation.

The RDM model, available in 4, 8 or 12 Ports, supports the bi-directional communication standard E1.20 Remote Device Management (RDM).

The Pathway Wall-mount DMX Repeaters provide the same robust features of our Rack-mount 8 port opto-splitters, in NEMA1 enclosures complete with a power supply and conduit knockouts for fast, easy installation.

FEATURES

- Internally pre-configured and pre-wired, ready for installation
- 4, 8, 12 or 16 Outputs [DMX-Only models]; 4, 8, or 12 Outputs [RDM-Enabled models]
- Up to 4 unique inputs [DMX-Only models]; or 3 inputs [RDM-Enabled models], or daisy-chain a single source
- Removable terminal connectors, with both compression-screw terminal and insulation-displacement contact (IDC) connectors supplied
- No fuses - self-resetting port protection recovers from voltage faults
- 120-277VAC, 50/60Hz power supply
- Direct pass-through and DMX line termination switch [DMX-Only models]
- RDM-compliant non-isolated 5th output port [RDM-Enabled models]
- LED Indicators for Port Activity, Power, DMX Input, and Iso Power
- Also available in Rack-mount form factor (PWREP RM RDMHUB) or as individual DIN units (PWREP DIN)

SPECIFICATIONS

Electrical	Input Ratings	120-277VAC, 50/60Hz
	Isolation & Fault Protection	<p>PWREP WM [xxxx] NONRDM 1500V isolation from DMX Input to DMX Outputs 250V fault protection on DMX ports</p> <p>PWREP WM [xxxx] RDM 3000V isolation between DMX Ports (1500V isolation from any DMX port and DMX Thru) 250V fault protection on DMX ports</p>
	Regulatory Compliance	ETL

Mechanical	Dimensions	<p>PWREP WM [xxxx] SML 10" W x 13" H x 4.5" D (254mm W x 330mm H x 114mm D)</p> <p>PWREP WM [xxxx] MED 10" W x 23" H x 4.5" D (254mm W x 584mm H x 114mm D)</p>
	Weight	<p>PWREP WM P4 TERM [xxxx] SML 9.4 lbs (4.25 kg) PWREP WM P8 TERM NONRDM SML 9.9 lbs (4.5 kg) PWREP WM P12 TERM [xxxx] MED 14.3 lbs (6.5 kg) PWREP WM P16 TERM NONRDM MED 14.9 lbs (6.75 kg)</p>

Environmental	Operating Temperature	14°F to 113°F (-10°C to 45°C)
	Relative Humidity	5-95%, non-condensing

General	Compliance	<p>PWREP WM [xxxx] NONRDM ANSI E1.11 DMX512-A R2013</p> <p>PWREP WM [xxxx] RDM ANSI E1.11 DMX512-A R2013 ANSI E1.20 RDM - Remote Device Management</p>
----------------	-------------------	---

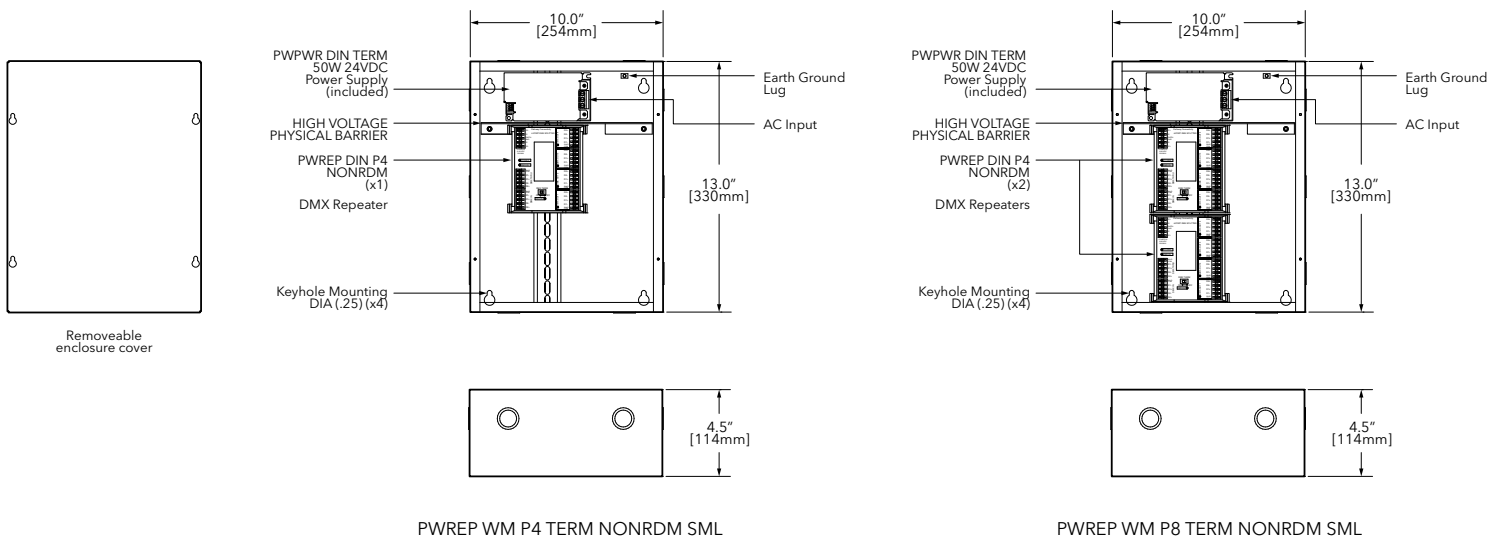
PART NUMBER CROSS-REFERENCE

PREVIOUS	NEW	
Part Number	Catalog Number	Description
4807	PWREP WM P4 TERM NONRDM SML	DMX Repeater, Wall-mount, 4-Ports, Compression Fit Terminal, DMX Only, Small 10" x 13" x 4.5"
4808	PWREP WM P8 TERM NONRDM SML	DMX Repeater, Wall-mount, 8-Ports, Compression Fit Terminal, DMX Only, Small 10" x 13" x 4.5"
4809	PWREP WM P12 TERM NONRDM SML	DMX Repeater, Wall-mount, 12-Ports, Compression Fit Terminal, DMX Only, Medium 10" x 23" x 4.5"
4810	PWREP WM P16 TERM NONRDM SML	DMX Repeater, Wall-mount, 16-Ports, Compression Fit Terminal, DMX Only, Medium 10" x 23" x 4.5"
4813	PWREP WM P4 TERM RDM SML	DMX Repeater, Wall-mount, 4-Ports, Compression Fit Terminal, E1.20 RDM Compliant, Small 10" x 13" x 4.5"
4814	PWREP WM P8 TERM RDM MED	DMX Repeater, Wall-mount, 8-Ports, Compression Fit Terminal, E1.20 RDM Compliant, Medium 10" x 23" x 4.5"
4815	PWREP WM P12 TERM RDM MED	DMX Repeater, Wall-mount, 12-Ports, Compression Fit Terminal, E1.20 RDM Compliant, Medium 10" x 23" x 4.5"

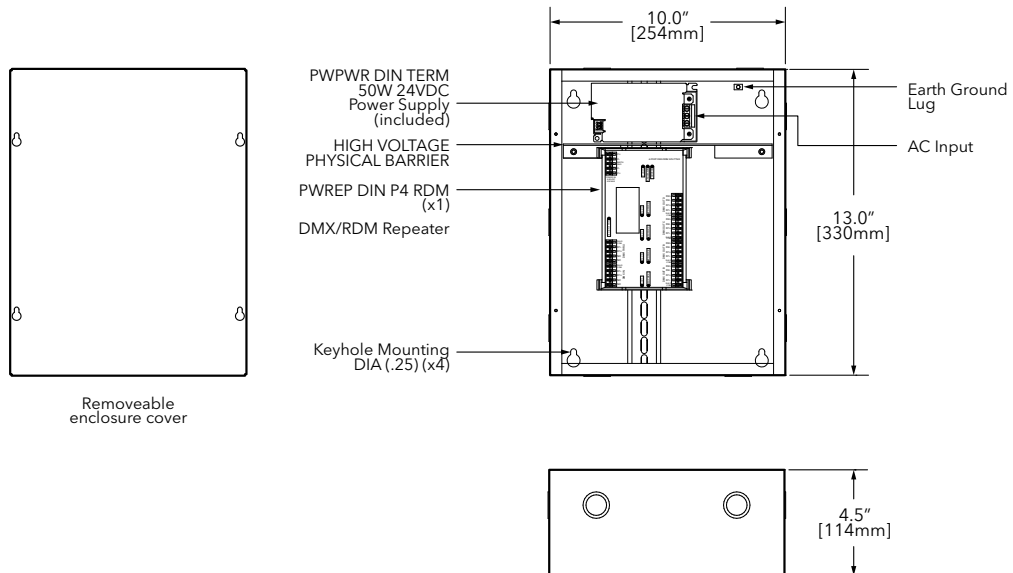
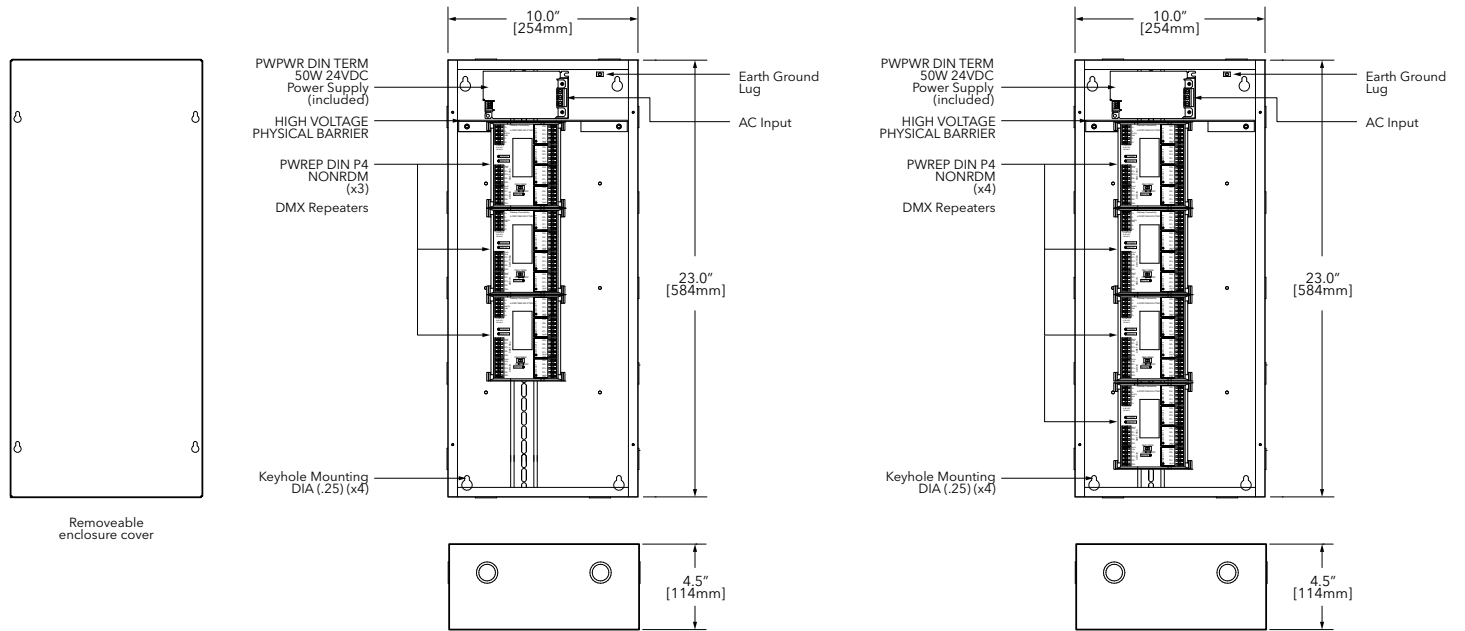
WIRING

DMX512 / RDM PINOUT		
Purpose	XLR / Terminal Block Pin #	RJ45 PIN # and Wire Color
Shield / Common	1	7 - White / Brown
Data - (complement)	2	2 - Orange
Data + (true)	3	1 - White / Orange
Not Used	4	6 - Green
Not Used	5	3 - White / Green
Not Used - Do Not Connect	N/A	4 - Blue
Not Used - Do Not Connect	N/A	5 - White / Blue
Not Used - Do Not Connect	N/A	8 - Brown

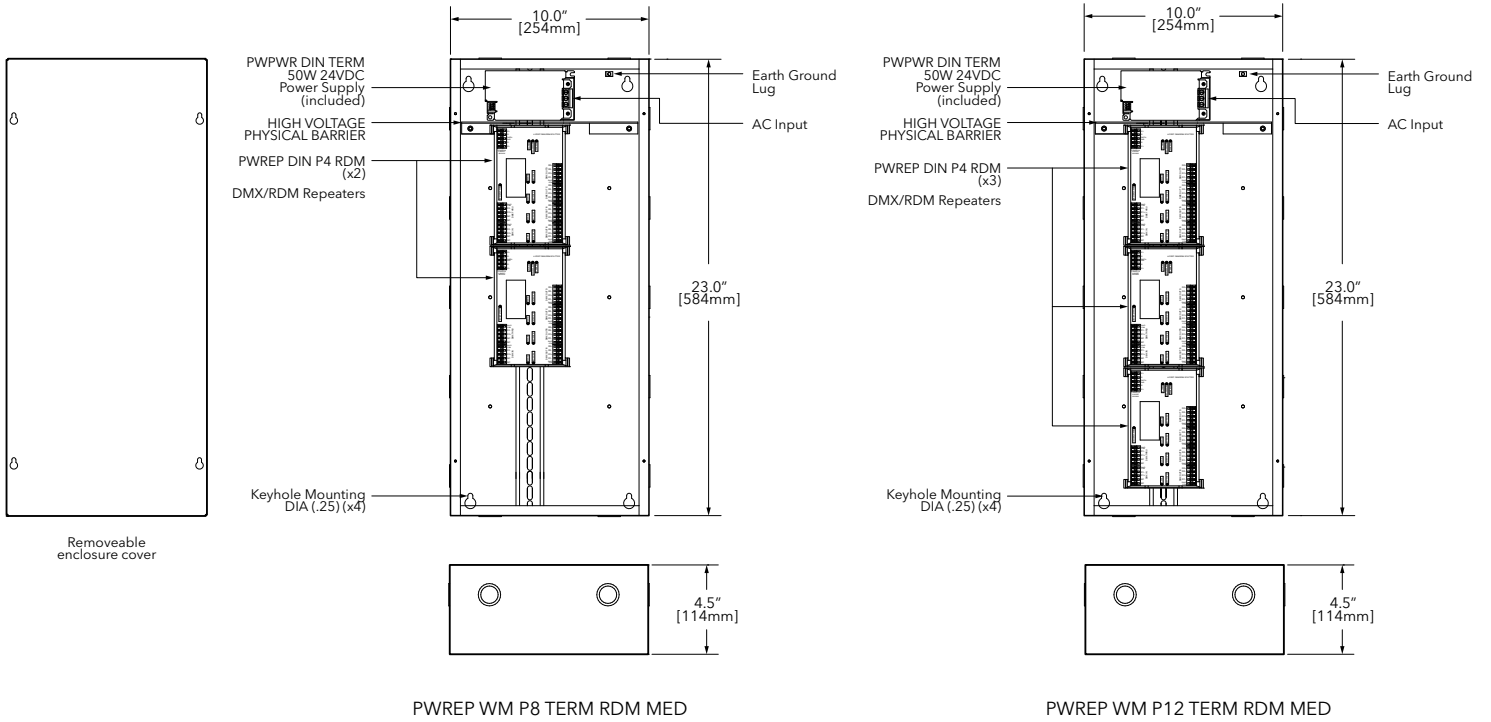
DIMENSIONS



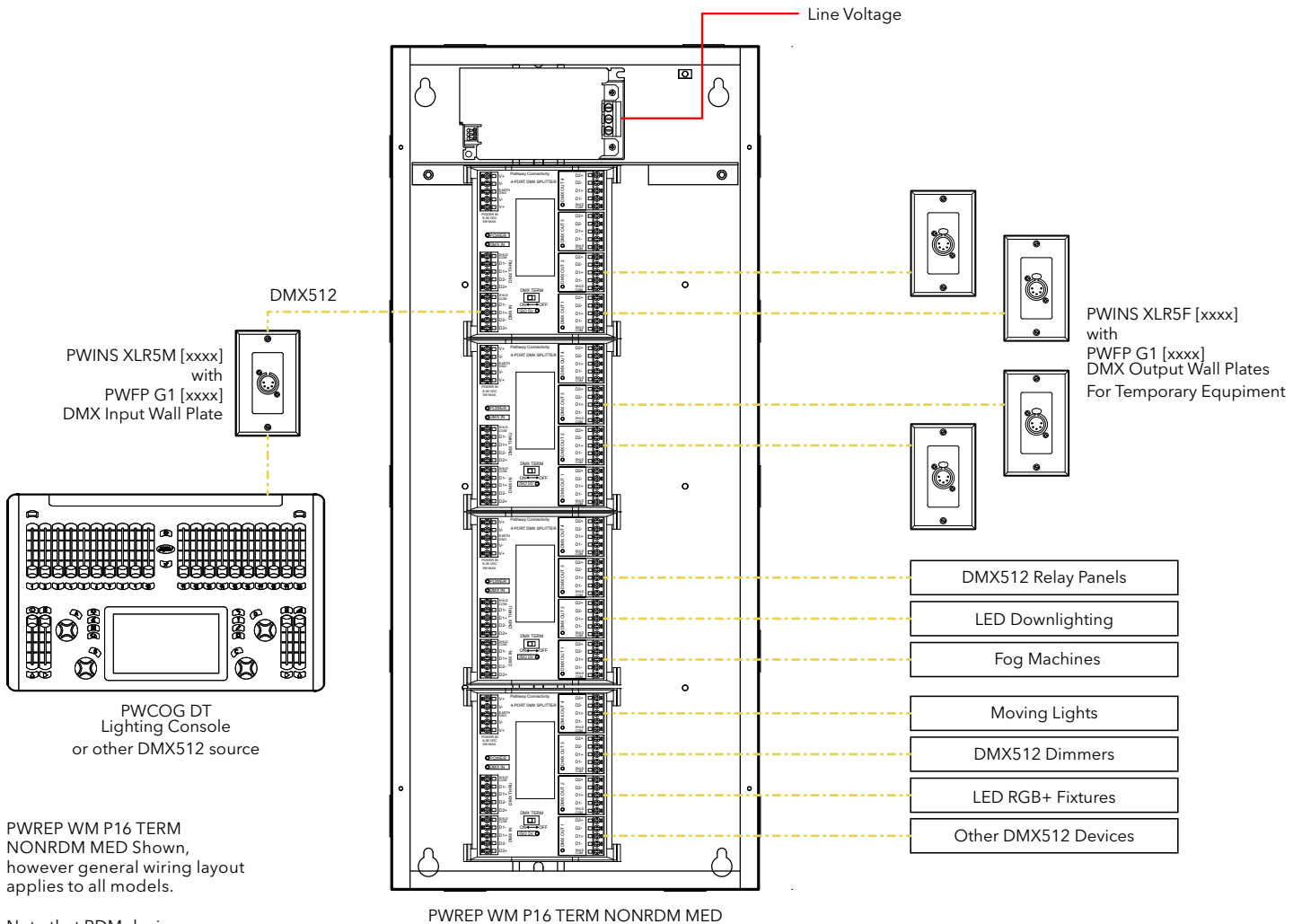
DIMENSIONS



DIMENSIONS



APPLICATION RISER



PWREP WM P16 TERM NONRDM MED Shown, however general wiring layout applies to all models.

Note that RDM devices connected to NONRDM models will not be discoverable and configurable via RDM.